



DxFLEX ROADSHOW



Dear Customer,

DxFLEX from Beckman Coulter is the next generation in clinical flow cytometry providing a key building block for your routine flow cytometry laboratory.

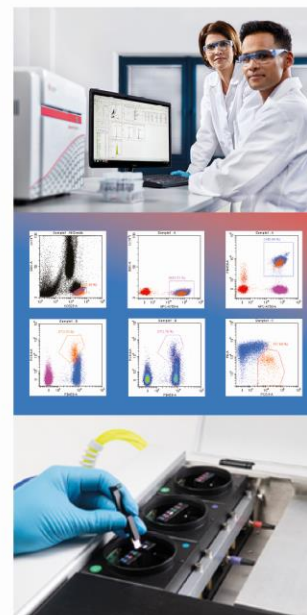
The DxFLEX compact design and ease of use along with its enhanced sensitivity and intuitive software, makes flow cytometry rigor and reproducibility achievable for both novice and expert clinical scientists.

Seven configurations are available with up to 3 lasers and 13 detectors, advanced detection technology, progressive application capabilities and upgrade-ready design makes this the most exciting new innovation in clinical flow cytometry.

We would like to demonstrate how easy it is to create new panels, adding new markers, facilitating accurate results and sample tracking - we hope to see you on our DxFLEX Roadshow.

Register now to secure your seat.

Your Beckman Coulter Life Sciences Team



13th January 2021 - 15:00 CET

AGENDA

15:00	Welcome Address	BEC LS Host
15:05	DxFLEX - What makes the difference?	BEC LS FM
15:25	DxFLEX Live!	BEC LS Applications
15:55	Q&A and Closing Comments	All



© 2020 Beckman Coulter, Inc. All rights reserved. Beckman Coulter, the stylized logo and the Beckman Coulter product and service names mentioned herein are trademarks or registered trademarks of Beckman Coulter, Inc. in the United States and other countries.

For Beckman Coulter's worldwide office locations and phone numbers, please visit Contact Us at beckman.com
FLOW-8017FLY10.20